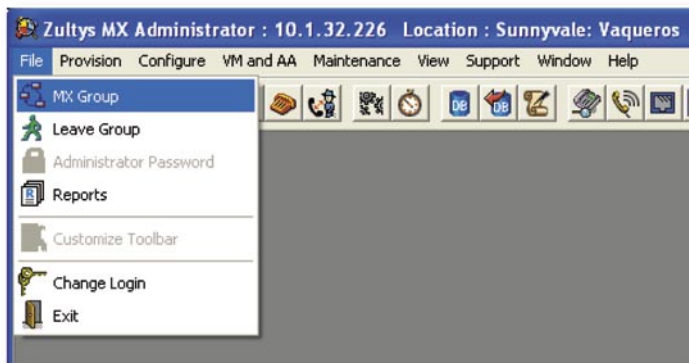


MXgroup

Overview

MXgroup is a software option for the MX250 that allows multiple MX250 systems to be connected into a seamless communications group. MXgroup extends MX250 features across multiple locations, making separate offices appear as a single entity. Users at one location can communicate with users at any other location in the same way they communicate with users at their own location. The MX250 systems communicate over a WAN or the Internet and are easily configured. No intervention is required by the users of the systems.



Seamless Connectivity

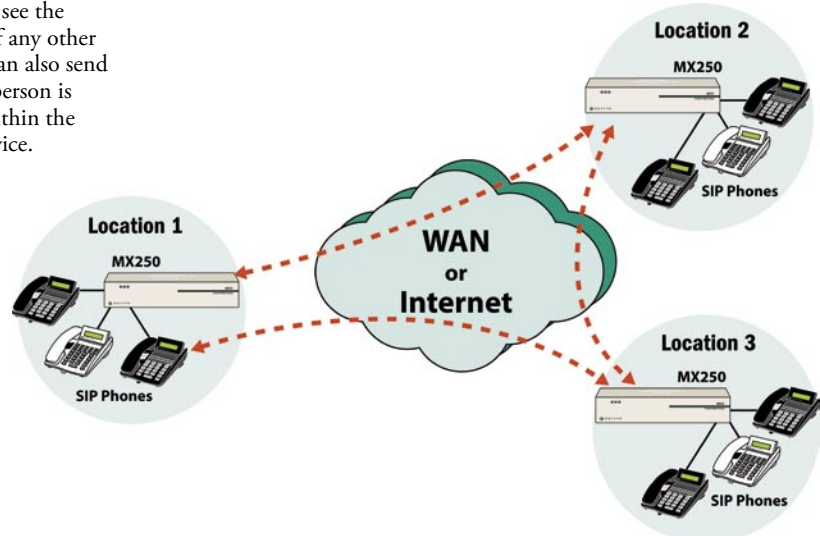
With MXgroup, up to 8,000 users within an enterprise can communicate with one another, regardless whether they are on different floors of the same building, in different cities, or in different countries. The MX250 systems appear as a unified system, extending the features of one MX250 across the entire group.

Each MX250 maintains a complete list of all users in the group and makes this list available to every user. Users can see the presence (Available, In a Meeting, At Lunch, etc.) of any other user, regardless where that person is located. Users can also send Instant Messages to any user, regardless where that person is located. All communication is securely contained within the enterprise and does not use a publicly accessible service.

Users of the MXgroup can create a buddy list that comprises people at their own location as well as those at remote locations. Using MXIE, the MX250's graphical user interface, users can place phone calls with a mouse click. Users can transfer calls between all locations and can create conference calls across all locations. Users can also hold video conversations between locations with standard equipment.

Key Features

- Seamless connectivity for multiple locations
- Internal extension dialling among all systems
- Presence and Instant Messaging among all users
- Immediate access to directory of all users from any location
- Failure of any node does not affect operation at other locations
- 2 to 32 MX250 systems can be grouped
- Up to 8000 users in a group
- Users can log into any location to be reached
- Voice calls between locations can use G.729A compression
- PSTN access can be retained at each location
- PSTN calls can be routed over WAN to save toll charges
- Video calls between locations
- Secure communications with encryption between locations
- Single or multiple administrators
- Group can be administered from a single location
- One single administration software
- Set up a group in as little as 5 minutes



Foreign Login

A user normally resident at one location can travel to a different location and log into the MX250 at that location without any special codes. That person's presence is immediately visible to all, and the users can all exchange instant messages exactly as before. All users can reach that person by dialling the same extension they would as if the user was at his or her home location.

The user receives notification of voice mails as before and can access his or her voice mail through MXIE or through the phone, just as at the home location.

People external to the company can also reach the user by dialling the same number, regardless of which MX250 they call. The system administrator can assign separate DID numbers to users so that they can be reached directly through the PSTN connected to different systems.

Toll bypass and Least Cost Routing

Each MX250 can connect to the PSTN. Therefore external calls to and from users at a location can use the local PSTN.

All internal calls are routed over the WAN so that no PSTN toll charges apply.

The system administrator can configure the dial plan so that certain calls to the PSTN are routed over the WAN to a remote MX250 and then to the PSTN from that remote location. This allows the lowest cost routes to be used for any outbound calls.

Remote Users

Users can work remotely and be linked into an office over the Internet or private VPN. They have full access to the features of the MX250 and their phones can be called by dialling their extensions. When the MX250 to which the user is remotely connected is part of a group, that user can access anyone in the enterprise, no matter where the other user is located.

Rank	Location	Address	Communication Status	Data Sync Status
1	Sunnyvale, Vaqueros	10.1.32.226	Self	Self
2	North Sydney	192.168.45.254	Connection OK	Synchronized
3	Wokingham UK	192.168.29.254	Connection OK	Synchronized

Security and Compression

All communications between sites can use the Advanced Encryption Standard (AES). This provides completely secure communications for the enterprise if the data is travelling over the public Internet. Speech calls between sites can be compressed to reduce the bandwidth that is used and increase the quality of communications.

Installation and Administration

A group of MX250 systems is very easy to install. Once the individual MX250s are configured as standalone systems and there exists IP connectivity among the locations, connecting the MX250s as part of a group can be accomplished in five minutes or less. This is all accomplished using the Administration UI software; the same tool used to configure and maintain all aspects of the system.

Subsequently, MX250s can be added to or removed from the group quickly. As changes are made to the group, the MX250s synchronize their data bases and immediately make the updated list of users available to everyone in the enterprise.

Each MX250 can be independently administered by local administrators, each with different access levels. For example, users can be added to or deleted from one location by local administrators. The changes propagate to all MX250s in the group. In addition, an enterprise can assign a master administrator for the group to ensure continuous and proper administration and security.

Any MX250 can be provisioned from any location, provided the person has the rights to do so. This removes the necessity of having skilled staff at each location.

Architecture and Survivability

An MXgroup is organised as a peer-to-peer network. This means that failure of any one MX250 or communication with it does not affect the operation of any other location. Changes can be made to an MX250 locally and when the group is restored those changes will be propagated to all other members of the group.

If there is PSTN access at each site, users can make and receive calls externally when the WAN fails. In this case, and for certain users (selected by the system administrator), calls between sites can be automatically routed over the PSTN.

An MX250 can still accept foreign logins even if that user's home location (MX250) cannot be accessed. This enables a business to continue to operate when additional time is needed to restore the other site.

Standards Based Devices

The MX250 system is 100% based on open standards, and can operate with any SIP device that complies with the SIP specifications. An enterprise can use the MX250 with SIP servers, phones, video devices, and applications from Zultys or other manufacturers to provide services to any user. With MXgroup, the additional services can instantly be shared among all users of the enterprise.

Zultys Technologies
771 Vaqueros Avenue
Sunnyvale, CA 94085
USA

Tel: +1-408-328-0450
Fax: +1-408-328-0451
Email: zultys@zultys.com
Web: www.zultys.com

